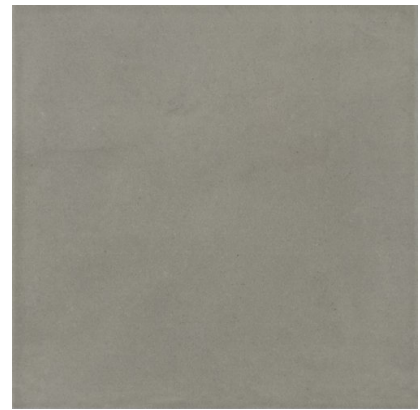


CONTEMPORARY MINERAL GREY

15X15

| REFERENCE | SIZE (cm) | THICKNESS (mm) | GROUP |
|----------------|-----------|----------------|-----------|
| A036711 | 15X15 | 8,50 | PC BIA GL |



DIMENSIONS AND SURFACE PROPERTIES

| | | |
|---|--------------|----------------------------------|
| Size, thickness, side straightness, flatness, orthogonality | UNE-EN 14411 | It accomplished all requirements |
|---|--------------|----------------------------------|

PHYSICAL PROPERTIES

| | | |
|--------------------------------------|-----------------|-------------------------|
| Water absorption capacity | EN ISO 10545-03 | < 0,5% |
| Flexion resistance | EN ISO 10545-04 | => 35 N/mm ² |
| Abrasion resistance (glazed Ceramic) | EN ISO10545-07 | III |
| Thermal shock resistance | EN ISO 10545-09 | It stands the test |
| Cracking resistance | EN ISO 10545-11 | It stands the test |
| Frost resistance | EN ISO 10545-12 | It stands the test |

CHEMICAL PROPERTIES

| | | |
|--|-----------------|-----|
| Resistance to acids | EN ISO 10545-13 | GLA |
| Resistance to alcalis | EN ISO 10545-13 | GHA |
| Resistance to cleaning products | EN ISO 10545-13 | GA |
| Resistance to chemical products in swimming pool water | EN ISO 10545-13 | GA |
| Stains resistance | EN ISO 10545-14 | 5 |

ANTI-SLIP CHARACTERISTICS

| | | |
|----------------------------|----------------|---------|
| Slip resistance (Rd) | UNE-EN 16165-C | Class 2 |
| Slip resistance (R) | EN 16165-B | R10 |
| Slip resistance (barefeet) | EN 16165-A | 0.00 |