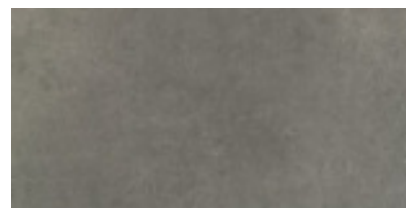


WABI GRAFITE LAPATTO RECT

60X120

| REFERENCE | SIZE (cm) | THICKNESS (mm) | GROUP |
|----------------|-----------|----------------|-----------|
| A034196 | 60x120 | 10,20 | PC BIA GL |



DIMENSIONS AND SURFACE PROPERTIES

| | | |
|---|--------------|----------------------------------|
| Size, thickness, side straightness, flatness, orthogonality | UNE-EN 14411 | It accomplished all requirements |
|---|--------------|----------------------------------|

PHYSICAL PROPERTIES

| | | |
|--------------------------------------|-----------------|-------------------------|
| Water absorption capacity | EN ISO 10545-03 | < 0,5% |
| Flexion resistance | EN ISO 10545-04 | => 40 N/mm ² |
| Abrasion resistance (glazed Ceramic) | EN ISO10545-07 | III |
| Thermal shock resistance | EN ISO 10545-09 | It stands the test |
| Cracking resistance | EN ISO 10545-11 | It stands the test |
| Frost resistance | EN ISO 10545-12 | It stands the test |

CHEMICAL PROPERTIES

| | | |
|--|-----------------|-----|
| Resistance to acids | EN ISO 10545-13 | ULA |
| Resistance to alcalis | EN ISO 10545-13 | ULA |
| Resistance to cleaning products | EN ISO 10545-13 | UA |
| Resistance to chemical products in swimming pool water | EN ISO 10545-13 | UA |
| Stains resistance | EN ISO 10545-14 | 5 |

ANTI-SLIP CHARACTERISTICS

| | | |
|----------------------------|--------------|---------|
| Slip resistance (Rd) | UNE-ENV12633 | Class 2 |
| Slip resistance (R) | DIN 51130 | R10 |
| Slip resistance (barefeet) | DIN 51097 | C |