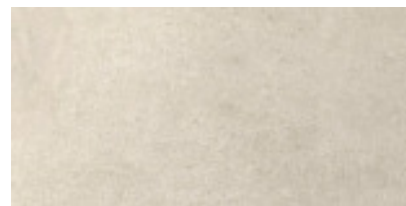


## STRU WABI SABBIA RECT.30X60

REFERENCE	SIZE (cm)	THICKNESS (mm)	GROUP
<b>A034209</b>	30X60	10,00	PC BIA UG



### DIMENSIONS AND SURFACE PROPERTIES

Size, thickness, side straightness, flatness, orthogonality	UNE-EN 14411	It accomplished all requirements
---	--------------	----------------------------------

### PHYSICAL PROPERTIES

Water absorption capacity	EN ISO 10545-03	< 0,5%
Flexion resistance	EN ISO 10545-04	=> 40 N/mm <sup>2</sup>
Deep abrasion resistance	EN ISO 10545-06	150
Thermal shock resistance	EN ISO 10545-09	It stands the test
Cracking resistance	EN ISO 10545-11	It stands the test
Frost resistance	EN ISO 10545-12	It stands the test

### CHEMICAL PROPERTIES

Resistance to acids	EN ISO 10545-13	ULA
Resistance to alcalis	EN ISO 10545-13	ULA
Resistance to cleaning products	EN ISO 10545-13	UA
Resistance to chemical products in swimming pool water	EN ISO 10545-13	UA
Stains resistance	EN ISO 10545-14	5

### ANTI-SLIP CHARACTERISTICS

Slip resistance (Rd)	UNE-ENV12633	Class 3
Slip resistance (R)	DIN 51130	R11